



Crompton Avenue , Bidford-on-Avon
B50 4DG

Jeremy
McGinn & Co

Guide Price £295,000

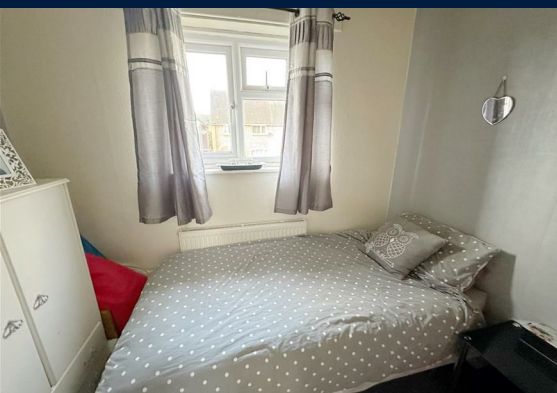


A fantastic opportunity to acquire a traditional semi-detached family home, occupying a generous corner plot and boasting an extensive rear and side gardens, positioned within an established residential road in the village of Bidford on Avon.

The property offers huge potential for extension (STPP) and currently comprises; Reception Hall, Living Room, Dining Area, Kitchen, side and rear covered walkway with useful outhouses (offering potential for conversion) Three Bedrooms, two of which are doubles and Family Shower Room.

Outside the rear garden offers a substantial patio area, whilst the side plot benefits from extensive lawns. There is also a driveway for parking 2 vehicles.





Tax Band: C

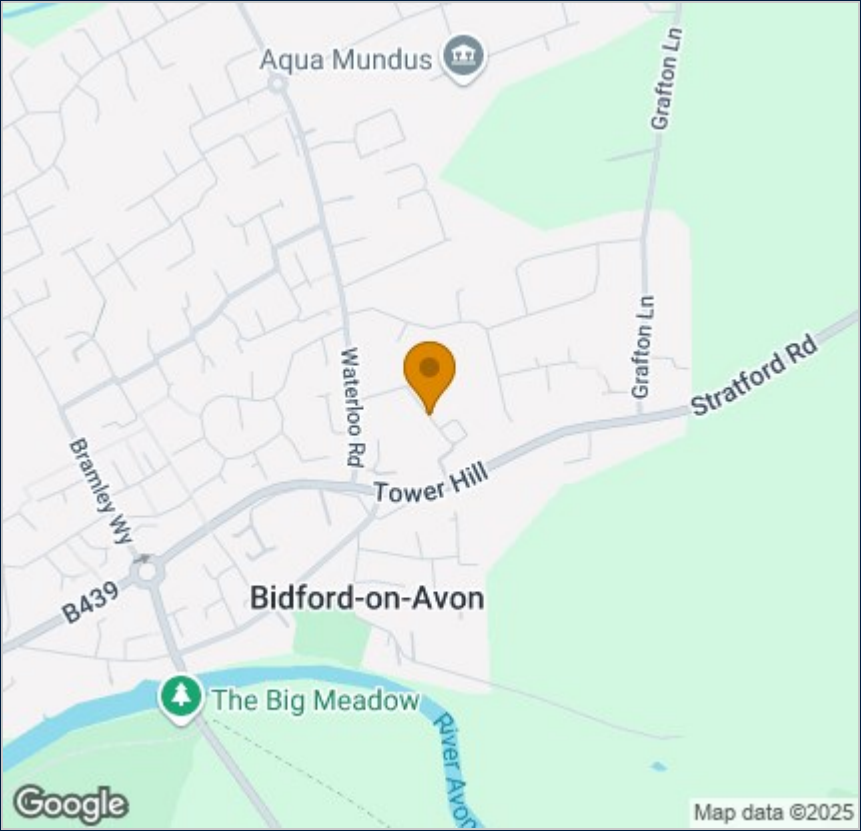
Council: Stratford District Council

Tenure: Freehold

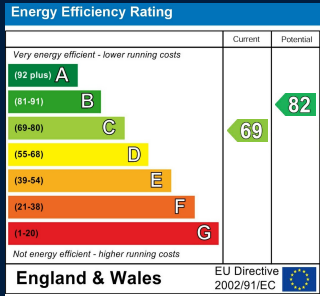
Floor Plan



Map



Energy Performance



Jeremy McGinn & Co

These particulars, whilst believed to be accurate are set out as a general outline only for guidance and do not constitute any part of an offer or contract. Intending purchasers should not rely on them as statements of representation of fact, but must satisfy themselves by inspection or otherwise as to their accuracy. No person in this firms employment has the authority to make or give any representation or warranty in respect of the property.

55 Ely Street, Stratford Upon Avon, Warwickshire, CV37 6LN
Tel: 01789 868168 Email: stratford@jeremymcginns.com www.jeremymcginns.com